

➤ Agitators and submersible mixers

SALOMIX™ side-mounted horizontal agitators

Features and benefits

- High efficiency results in energy savings and improved agitation
- Cast propeller blades with adjustable blade angle give accurate power and pumping control
- Conical body shape supports the propeller and ensures vibration free operation
- Wide hydraulic coverage enabling the use in all mixing applications
- Low total cost of ownership through smart design and energy efficient propeller
- Quick and easy installation, safe operation, easy maintenance and service

SALOMIX™ SSF, SLF/STF gear drive

Key characteristics

Stock concentration	up to 6%
Propeller diameters	630 to 1'300 mm / 25 to 52 in.
Power	7.5 to 55 kW / 10 to 40 hp

Applications

- Mixing in tanks and storage towers
- Clean and slightly contaminated liquids
- Viscous liquids, solids containing liquids
- Fibrous slurries, slurries



SALOMIX™ SLG/STG gear drive

Key characteristics

Stock concentration	up to 6%
Propeller diameters	500 to 1'650 mm / 20 to 65 in.
Power	4 to 90 kW / 5.5 to 125 hp

Applications

- Mixing in tanks and storage towers
- Clean and slightly contaminated liquids
- Viscous liquids, solids containing liquids
- Fibrous slurries, slurries



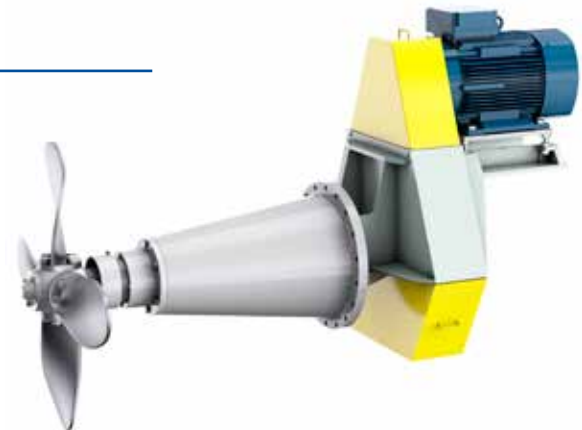
SALOMIX™ SLB/SLH, STB belt drive

Key characteristics

Stock concentration	up to 6%
Propeller diameters	500 to 1'650 mm / 20 to 65 in.
Power	4 to 110 kW / 5.5 to 150 hp

Applications

- Mixing in tanks and storage towers
- Clean and slightly contaminated liquids
- Viscous liquids, solids containing liquids
- Fibrous slurries, slurries
- SLH for green liquor dissolving tanks



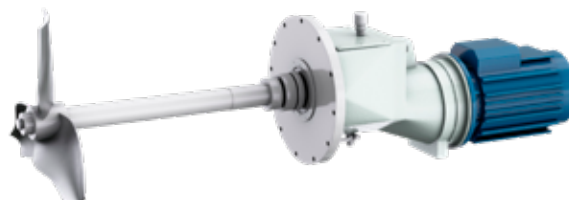
SALOMIX™ SLR/STR gear drive

Key characteristics

Stock concentration	up to 6%
Propeller diameters	315 to 800 mm / 12 to 30 in.
Power	2.2 to 11 kW / 3 to 15 hp

Applications

- Mixing in tanks and storage towers
- Clean and slightly contaminated liquids
- Viscous liquids, solid-containing liquids
- Fibrous slurries, slurries



SALOMIX™ SSA side-mounted agitators belt drive

Features and benefits

- Excellent performance
- High-efficiency propeller with large axial thrust
- Suitable for most demanding industrial applications
- Heavy duty design with a bearing lifetime of minimum 200'000 hours
- Low total cost of ownership through smart design and energy efficient propeller
- Quick and easy installation, safe operation, easy maintenance and service
- Wide and comprehensive hydraulic coverage enabling the use in all mixing applications

Key characteristics

Stock concentration	up to 6%
Propeller diameters	800 to 1'300 mm / 32 to 52 in.
Power	7.5 to 75 kW / 10 to 100 hp
Maximum speed of rotation	up to 300 rpm

Applications

- Mixing in tanks and storage towers
- Clean and slightly contaminated liquids
- Viscous liquids
- Fibrous slurries, slurries



SALOMIX™ L top-mounted vertical agitators

Features and benefits

- The L series covers gear or belt-driven agitators mounted vertically on the tank top or bottom flange
- Versatile impeller options meet any process needs in compliance with the rheology of the mixed fluid
- Maximum modular component flexibility
- Applicable for tanks from 1 to 2'500 m³ / 88'285 ft³
- The large hydraulic coverage satisfies the most demanding requirements of industrial agitation applications

Key characteristics

Propeller diameter	up to 8'000 mm / 316 in.
Shaft length	up to 30 m / 100 ft.
Power	up to 450 kW / 600 hp
Maximum speed of rotation	up to 1'000 rpm
Temperatures	up to 180°C / 356°F

Applications

- Mixing in tank
- Clean and slightly contaminated liquids
- Viscous liquids and liquids with high gas content
- Fibrous slurries, slurries
- Solids containing liquids



Scaba side-mounted belt driven propeller agitators

Features and benefits

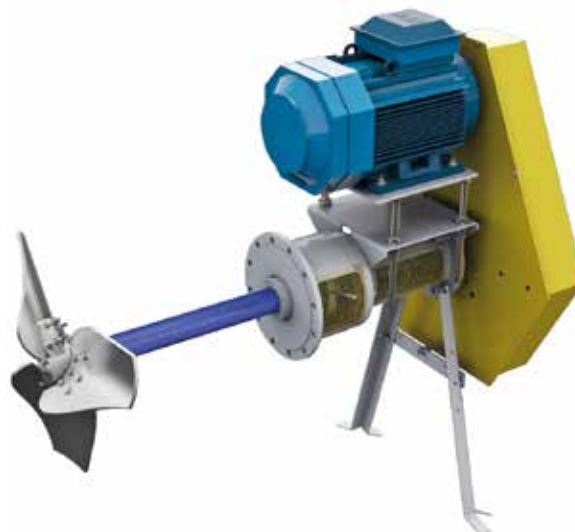
- Sturdy construction with rigid shaft and bearings
- High efficiency results in energy savings and improved agitation
- High flow SHP1 and SHP18 propellers are used to generate good axial flow
- Both mechanical seals and stuffing box alternatives
- Possibility to change seal without emptying the tank with stuffing box
- Wide hydraulic coverage enabling the use in all mixing applications

Key characteristics

Stock concentration	up to 6%
Propeller diameter	500 to 1'500 mm / 20 to 60 in.
Power	0.12 to 250 kW / 0.16 to 335 hp

Applications

- Mixing in tanks and storage towers
- Clean and slightly contaminated liquids
- Viscous liquids
- Fibrous slurries, slurries
- Solids containing liquids



Scaba top-mounted agitators

Features and benefits

- Scaba top-mounted series covers gear or belt-driven agitators mounted vertically on the tank top or bottom flange.
- Dry installed agitators rely on a deep process knowledge, which enable us to tailor-make the agitators to meet your specific need. This ensures the required process result with a minimum energy input
- Versatile impeller options
- High efficiency SHP propellers
- Good axial flow
- Scaba TreatX standardized agitators for water and wastewater treatment processes

Key characteristics

Propeller diameter	100 mm to 6 m / 4 to 236 in.
Shaft length	up to 30 m / 100 ft.
Power	up to 450 kW / 600 hp
Temperatures	up to 180°C / 356°F

Applications

- Mixing in tanks
- Clean and slightly contaminated liquids
- Viscous liquids and liquids with high gas content
- Fibrous slurries, slurries
- Solids-containing liquids

